

Valmatics 4.0



The market's only control system with integrated drying schedule simulations for batch and continuous kilns.



Clearly, there are many reasons for Valutec's successes on the market. It would be easy to point to factors such as offering the best solutions based on customer needs and market-leading development work.

However the most important success factor is really about something even deeper: Our conviction that better wood drying leads to greater competitiveness and an increased use of wood. This is Valutec's inner driving force and the very reason for our existence. By making you, our customers, profitable, we earn our place in the process chain and are inspired to continually develop innovative ideas.

A good example of this is our new control system, the Valmatics 4.0, developed for Industry 4.0. It is the only control system on the market that combines drying schedule simulations with adaptive control and calculates your optimal drying process for all types of lumber dry kilns. For us, it is a very good way to contribute to your profitability and ultimately increase the use of wood.

What is Industry 4.0?

Industry 4.0, the fourth Industrial Revolution, is a term that encompasses a range of technologies within the fields of automation, manufacturing technology and industrial process IT. In other words, automated industrial processes.

Intelligent control system for the new industry

Developed for Industry 4.0

The 4.0 is developed for the new industry, with embedded intelligence through simulators. It is the only control system on the market that combines adaptive control with simulation models. At last the integrated simulators suit all drying models and calculate your optimal drying process, allowing for a fully autonomous wood drying process.

User interface

A modern, intuitive user interface based on the latest technology in wood drying. Better information from measurement systems and easily manageable settings for simple optimization with the minimum margin for error. The Valmatics 4.0 has a simpler and faster troubleshooting function with a display of trends, and can of course be linked to external systems such as business systems.

Future-proof

The new control system is adapted to the latest PLC technology, enabling you to live up to your customers' increased expectations and future quality requirements.

Property-centred control

The Valmatics 4.0 has an improved and simplified property-centred control and is the only control system on the market that enables optimization based on capacity, quality and energy consumption simultaneously.

Optimised for the TC Dryer

Today's advanced TC dryers, with individual climate control in each zone, make demands on the operator that can be difficult to manage. The Valmatics 4.0 has the only simulator on the market for ducted and TC dryers, offering you control with full schedules in up to 14 zones at the same time. The operator only needs to know the characteristics of the wood and the desired output quality, and the system takes care of the rest.

Reverse compatibility

The Valmatics 4.0 is future-proof based on the latest technology, but is still designed to be reverse-compatible. This is to reduce costs in the event of an upgrade.

Calculate your optimal drying process at the touch of a button

Choose the wood size

Choose between different drying models connected to the Valmatics 4.0.

Status

See the current status, traction interval, and time to next input.

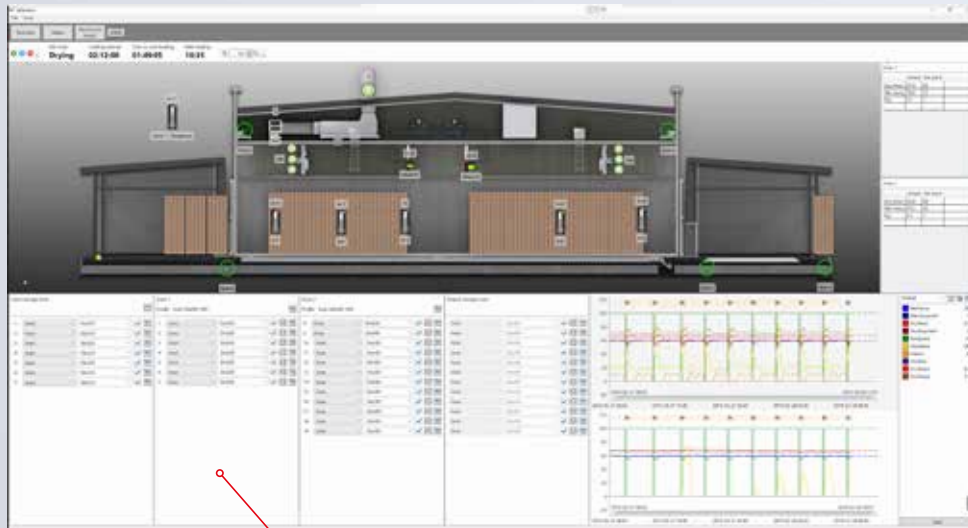
Zones

Complete schedules in up to 14 zones simultaneously. Refer to information about the drying set number, time in the dryer, time left, dimension and type of wood.

Trend curve

Monitor the drying process in real time with the new display of trends, which simplifies troubleshooting.





Drying scenario

In the drying scenario you can see information about the selected batch or continuous kiln.

Configure the scenario

Possibility to add the desired sensors/signals, e.g. fans or temperature sensors.

Package feeding

Follow the package feed in different zones, the status of the feed motors and the light bars for safety.

Trends in detail

Select a position in the trend curve to see detailed values. The feature is freely configurable and allows you to create your own personal trends.

Simulator technology for all drying models

Perfect drying from the first batch

The Valmatics 4.0 is the only control system on the market that combines simulator technology with an adaptive control system. With the market's most advanced drying simulators, you get perfect drying results from the first batch without costly running-in. The system also has contactless moisture quota measurement that can calculate the moisture ratio with an error margin of less than 1%.

- Continuous kilns
- TC dryers
- Batch kilns

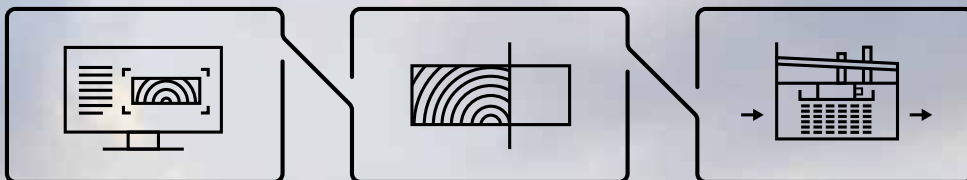
Utilize the flexible features of the modern TC dryer

The TC model is an advanced dryer with significant freedom to mix dimensions. With the new automation functions of the Valmatics 4.0, you can now take full advantage of the potential of the TC dryer. It allows for wood drying with complete schematics of up to 14 zones simultaneously and individual climate control for each zone.



Automate and optimize the drying process

The Valmatics 4.0 makes the wood drying process flexible and cost-effective. The ability to connect with business systems allows the optimal drying process to be created automatically without operator intervention. If necessary, the operator can then easily monitor the drying process with the help of the new trend curve. This frees up time for more important operations such as saw planning, quality control and sampling.



Business system

The customer's quality requirements are registered in the business system.

Simulation

The simulator calculates the optimal drying process.

Drying

The operator monitors the drying process in the platform.



SWEDEN

Valutec AB
Box 709
SE-931 27 Skellefteå
SWEDEN

Phone +46 (0)910 879 50
Fax +46 (0)910 879 59

valutec@valutec.se
www.valutec.se

NORWAY

Fønhus Maskin AS
Hegdalingen 6
NO-3261 Larvik
NORWAY

Phone +47 33 16 56 50
Fax +47 33 16 56 60

info@fonhus.no
www.fonhus.no

FINLAND

Valutec Oy
Tehdaskylänkatu 11 A
FI-11710 Riihimäki
FINLAND

Phone +358 75 756 1401
Fax +358 (0)19 760 4440

valutec@valutec.fi
www.valutec.fi

NORTH AMERICA

Valutec Wood Dryers Inc.
3924 Oxford Street
Port Coquitlam, BC
CANADA, V3B 4E8

Phone +1 416 640 7478
Cell: +1 778 868 3695

ingo.wallocha@valutec.ca
www.valutec.ca

RUSSIA

Valutec LLC
Marata str. 82 A, office 82
191119, St.-Petersburg
RUSSIA

Phone +7 911 779 51 46

artem.veretennikov@valutec.ru
valutec.ru

**GERMANY, AUSTRIA
AND SWITZERLAND**

SCANTEC Industrieanlagen GmbH
Hans-Riedl-Strasse 13
D-85622 Feldkirchen
GERMANY

Phone +49-0(89)-744244-10
Fax +49-0(89)-744244-144.

info@scantec.org
www.scantec.org



With nearly 100 years in the industry Valutec has developed drying equipment for the sawmill industry. Over the years we have delivered more than 4 000 wood dryers to customers in both Scandinavia and the rest of Europe. Valutec is Europe's largest supplier of wood dryers.

Valutec reinvests at least 5% of its annual turnover into research and development. Close collaboration with leading researchers has resulted in continuous kiln dryers and batch kiln dryers which today are market leaders in terms of both quality and total economy. Additionally, Valutec's development work in control systems and simulators has resulted in value-adding solutions, making it possible to seize the full value of the raw material.

The Valutec Group AB includes Valutec AB, Skellefteå, Valutec Oy in Riihimäki, Finland, Valutec LLC in St. Petersburg, Russia and Valutec Wood Dryers Inc in Vancouver, Canada. Collectively, the Group has a complete range of products based on Swedish and Finnish expertise in wood drying. Total sales amount to approximately SEK 450 million.